

Griffco Valve Inc.
6010 North Bailey Ave.
Amherst, NY 14226
Phone: 1 800-474-3326
Fax: 1 716-835-0893

PRHP Series PRESSURE RELIEF VALVES



Griffco diaphragm pressure relief valves are designed to protect chemical feed systems from over pressure damage caused by defective equipment or a blockage in the chemical feed line. Robust construction ensures reliability in the rigorous service of municipal and industrial applications. Wetted materials include **316 SS, A 20 and Hast. C.**
Available sizes: 1/4", 3/8", 1/2" and 1"

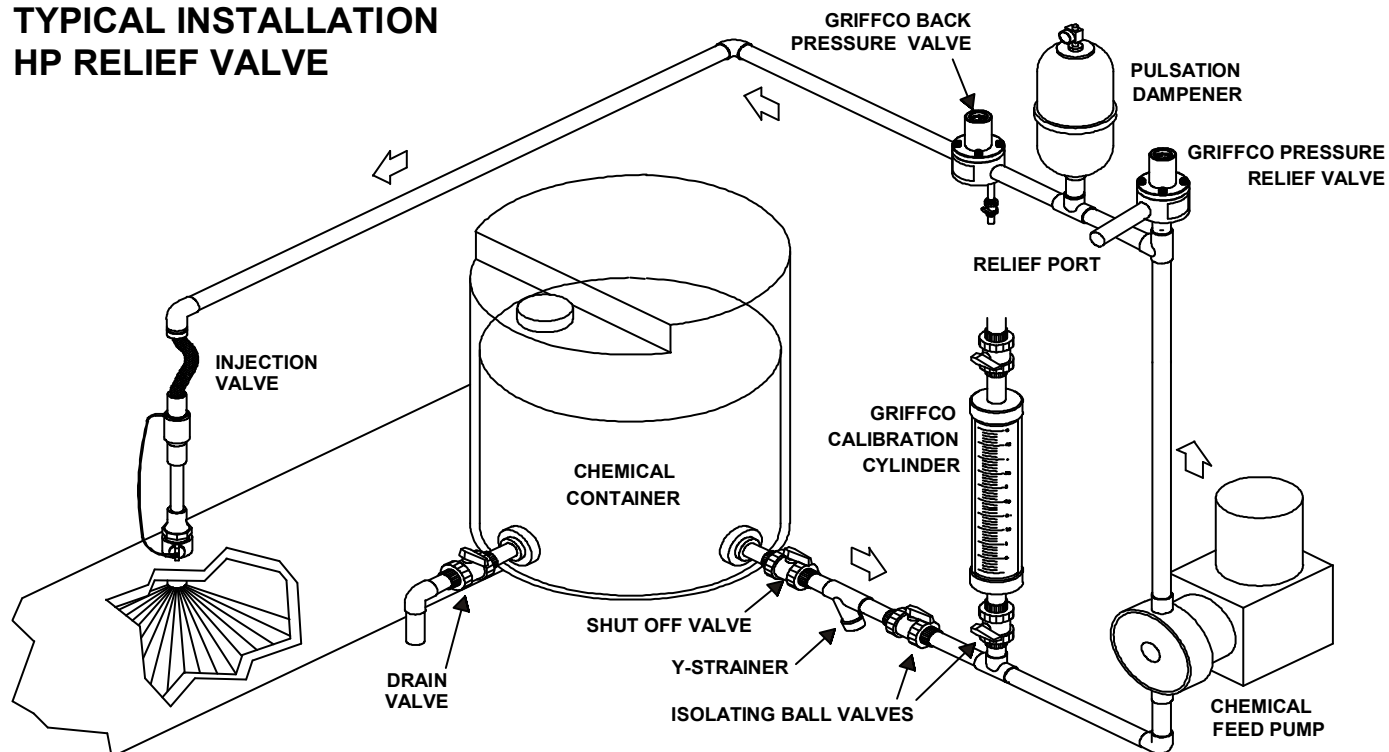
Features:

- High Reliability / Low Cost
- Pressure Range 200 – 2000 psi
- Compact Size for OEM Applications
- 2 Port, 90° Configuration
- Robust, Machined Construction
- Kynar Piston
- Wide Range of Materials

Operation:

Griffco high pressure relief valves operate when the pressure in the chemical system exceeds the preset pressure of the valve. The piston is held against the valve seat by an internal spring. When the preset pressure is exceeded the piston is forced up and the chemical flows out the relief port, to drain or back to the chemical tank. The valves are pre-set on request, however they are field adjustable from 200 - 2000 psi via the adjustment screw. The relief valve should be set approximately 10% higher than the system operating pressure. Installation should be made as close to the pump as possible, without any valves or accessories between the relief valve and the pump. Consult your pump manufacturer for his recommendations.

TYPICAL INSTALLATION HP RELIEF VALVE



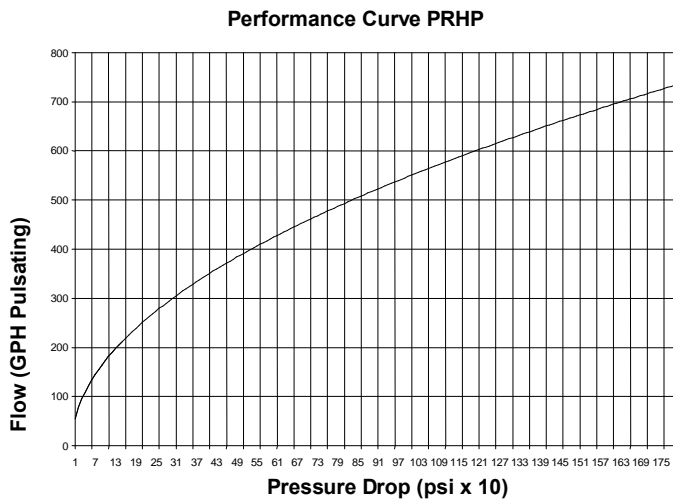
CALL 1 - 800 - GRIFFCO

Bulletin # PRT1003-2002

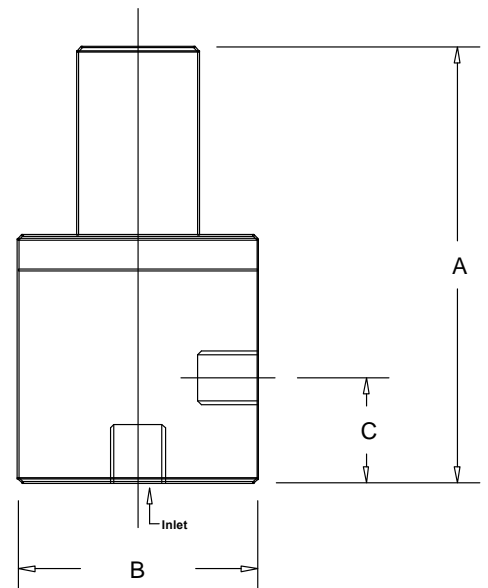
Technical Data:

Sizes: Model PRHP			1/4", 3/8", 1/2"
Connections:			NPT and Socket
Pressure Adjustment			200 – 2000 psi
Max Flow Rates @ 1750 psi			Shipping Weight: lbs
Size	Pulsating		Metal / Metal Top:
1/4"	700 USgph		3.0
3/8"	700 USgph		3.0
1/2"	700 USgph		3.5
Max Temperature: (°F)			300°, (Peak Short Term 390°)
Materials of Construction:			
Piston			PVDF
Diaphragm			PTFE / EPDM, Optional: Viton & PTFE / Viton
Valve Top			316 SS
Valve Body			316 SS, A 20, Hast. C, Others on Request

Performance Curves:



Dimensions:



Product Codes For Ordering:

PRHP

□ □ □ □ □
1 2 3

1 = Size

025 . 1/4+
038 . 3/8+
050 . 1/2+
100 . 1+

2 = Material

S - 316 SS
A - Alloy 20
C - Hastalloy C

3 = Options

V - Viton Diaphragm
S - Socket Connections

D	A	B	C
1/4"	4.60	2.375	0.75
3/8"	4.60	2.375	0.75
1/2"	4.60	2.375	1.10
1"			