

# Instruction Sheet

## Remote Auto-Flush Controller

### 30344 120VAC

**NOTE:**

For use with LMI pumps that are NOT equipped with Liquid Ends 29, 79 or 89, one of the following Primer Flush Kits must be installed:

Kit No.	For Tubing Size
26220	.375" O.D.
26221	.5" O.D. (70 & 80 Series LE's)
26708	.5" O.D. (20 & 30 Series LE's)

### I. Unpacking

LMI's remote auto-flush controller is shipped with 6 ft (1.8 m) of power cord for connection to a 115 VAC electrical power source. Remove remote auto-flush controller from carton. Notify delivery carrier immediately if there are any signs of damage to the unit.

### II. Flush Connection

- A. A source of water should be available for the flush connection. The flush line pressure must be at least 3 psi (0.21 Bar) greater than the pressure at the point of slurry injection. A 1/8" NPT male x 3/8" O.D. tubing adapter is supplied with the remote flush. This adapter is for making the connection from user supplied clear water piping to the pump solenoid valve.
- B. Install the pipe thread to tubing adapter at the clear water piping. It is recommended that a shut off valve be installed before the adapter to allow for easy removal of the pump for servicing.
- C. Cut a sufficient length of translucent polyethylene tubing and route between the clear water piping and the solenoid inlet valve.

**NOTES:**

1. If the clear flush water source is from potable water supply, a suitable back flow preventer, (user supplied) approved under local plumbing codes, must be installed on the line between the water supply and the solenoid valve at the pump. It is also

recommended that a Y strainer be provided on this line to assure efficient solenoid valve operation. The inlet line pressure must not exceed 125 psi (8.6 Bar).

2. On swimming pool installations for the addition of diatomaceous earth filter aid, the clear water source should be from the discharge side of the pool circulating pump.
3. If the water supply line to the flush water connection is the same line into which the chemical pump is injecting, the point of injection must be downstream from the flush water line branch.

### III. Flush Control Adjustment

#### A. Manual

The pump head can be manually flushed by holding the remote flush panel switch in the manual flush position. The switch will spring back to the OFF position when released.

#### B. Automatic

1. The POWER ON/AUTO FLUSH switch position activates the automatic flush feature.
2. The automatic flush control adjustment dial can be set to control the time in seconds during which the solenoid valve is open allowing clear water to flush the pump head. Flushing occurs at intervals of approximately one minute. The duration of the flush is determined by the flush dial setting.

**Example:**

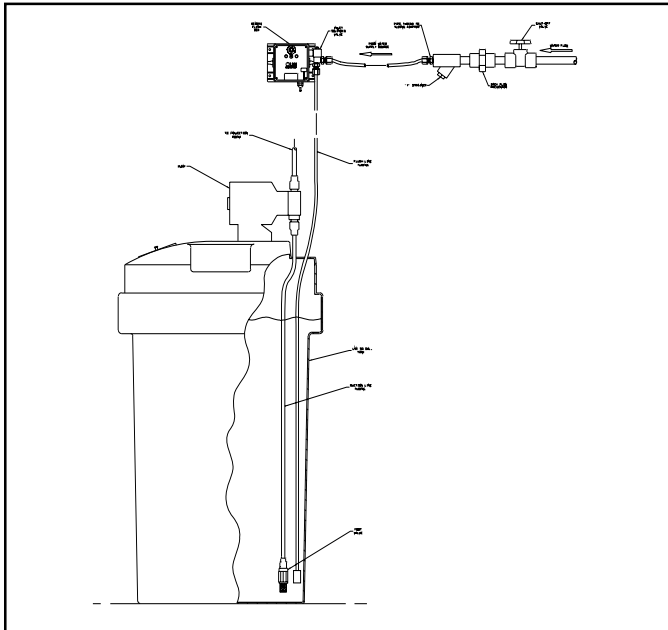
With the control switch in the AUTO FLUSH position, and the flush control dial set at 20, approximately once per minute the solenoid valve will open for 20 seconds allowing clear water to flush the complete liquid handling end of the pump.

3. There is no solution injection during flushing.

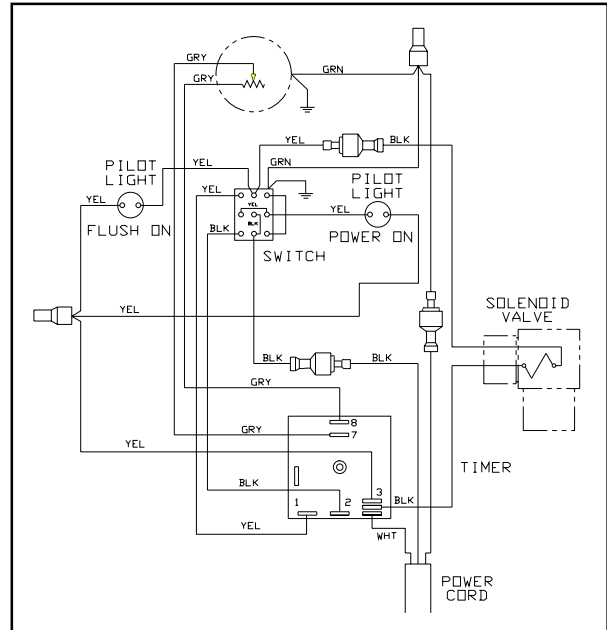
See reverse for parts list, mounting dimensions and installation drawing.



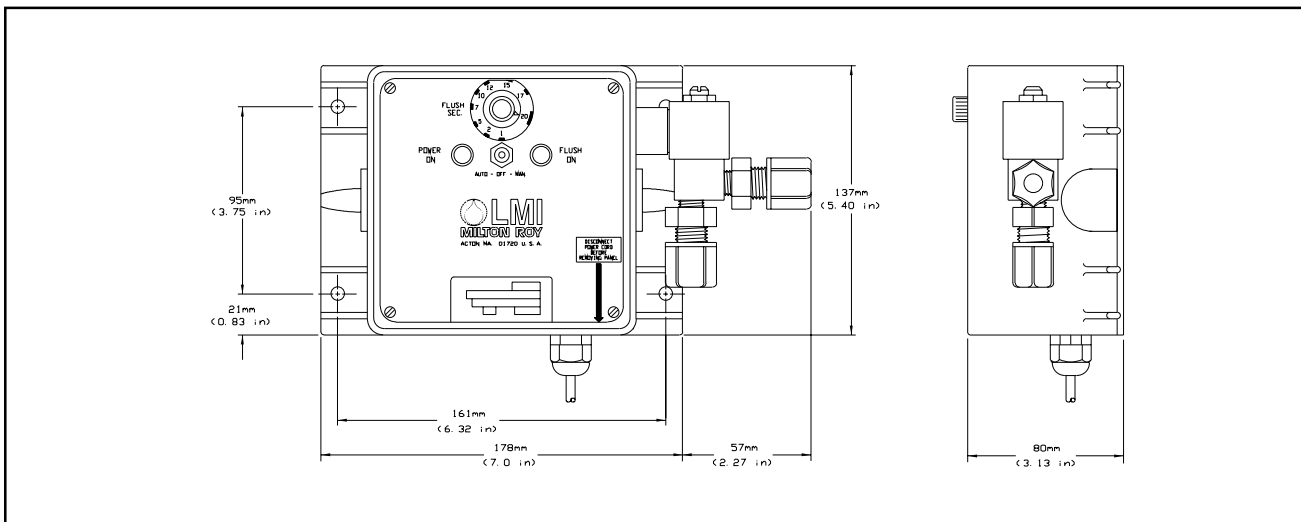
201 Ivyland Road  
Ivyland, PA 18974 USA  
TEL: 215-293-0401  
FAX: 215-293-0445  
<http://www.lmipumps.com>



**TYPICAL INSTALLATION**



**WIRING DIAGRAM**



**MOUNTING DIMENSIONS**

**PARTS LIST**

PART NO.	DESCRIPTION	QUANTITY
		30344
48803	Timer, 115V	1
10422	Retaining Ring	1
10181-G	Pilot Light, 115V	1
48807	Potentiometer Assembly	1
27719	Cord Assembly, 115V	1
30825	Switch Assembly	1
31459	Solenoid Valve Assembly, 115V	1