

# Liquid End Sheet

## LE-191 / LE-191U / LE-192 / LE-192U

When pumping solutions, make certain that all tubing is securely attached to the fittings. It is recommended that tubing or pipe lines be shielded to prevent possible injury in case of rupture or accidental damage. Always wear protective clothing and face shield when working on or near your metering pump.

### A. INSTALLING INJECTION CHECK VALVE

1. The purpose of the injection check valve is to prevent backflow from the treated line.
2. A ½" NPT female fitting with sufficient depth will accept the injection check valve.
3. To insure correct seating of the ball inside the injection check valve, the injection check valve should be installed upwards (vertically) into bottom of the pipe.

### B. CONNECTING DISCHARGE TUBING

**NOTE:** *Cut tubing to length needed for discharge line.*

1. Route tubing from the injection check valve to the metering pump, making sure it does not touch hot or sharp surfaces, or is bent so sharply that it kinks.
2. Slide the small end of the coupling nut onto tubing, then slide on the clamp ring.
3. Push tubing onto the valve housing so that tubing flares out and butts up against valve housing and will not go any further.
4. Slide the clamp ring and coupling nut to the threads and engage. While pushing the tubing onto the valve housing nozzle, tighten the coupling nut by hand until tubing is held securely in place.

**Excessive force will crack or distort fittings.  
DO NOT USE PIPE WRENCH.**

### C. CONNECTING SUCTION TUBING

1. Cut suction tubing to a length so that the foot valve hangs just above the bottom of the solution container. Maximum recommended vertical suction lift is 5 ft (1.5 m).
2. Follow same procedure in connecting suction tubing to suction valve and foot valve (see **B. Connecting Discharge Tubing**).

### D. PRIMING

1. Temporarily remove tubing from the injection check valve and hold the end of tubing so it is above the level of the pump.
2. Start pump. Set at 80% speed and 100% stroke.
3. As soon as solution is visible through translucent discharge tubing, just past the discharge valve, stop the pump.
4. The pump is now primed.
5. Reconnect tubing to the injection check valve.

#### **NOTE:**

- (a) *Pump is normally self-priming if suction lift is not more than 5 ft (1.5 m), valves in the pump are wet with water (pump is shipped from factory with water in pump head) and the above steps (D. Priming) are followed.*
- (b) *If the pump does not self prime, remove discharge valve housing and ball and pour water or solution slowly into discharge port until head is filled. Follow step D. Priming thereafter.*



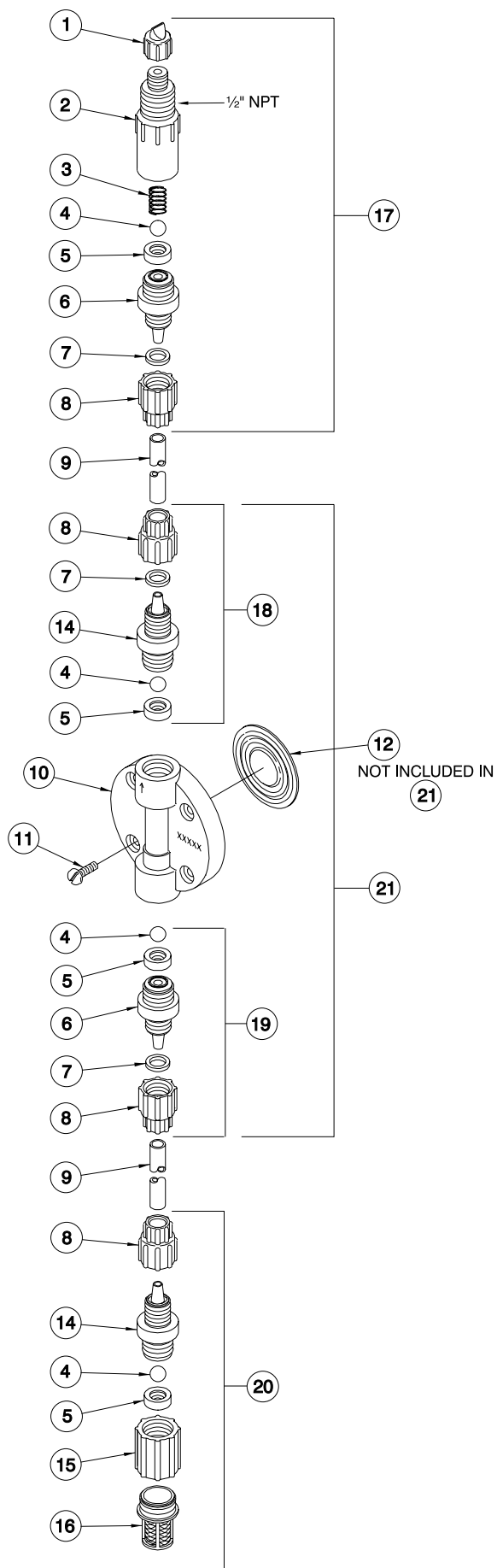
8 Post Office Square  
Acton, MA 01720 USA  
TEL: (978) 263-9800  
FAX: (978) 264-9172  
<http://www.lmipumps.com>



Replaces same of Rev. J 1/96  
1399.J 2/98

**NOTE:**

Threaded connections into pump head are 3/4"-16 straight threads. **DO NOT USE TEFLON® TAPE.** These joints are sealed by seal ring valve seats (item 6 on exploded view).



Key No.	Part No.	Description	Quantity			
			LE-191	LE-191U	LE-192	LE-192U
1	27352	Flapper Valve	1	1	1	1
2	10394	Injector Fitting, Polypropylene	1	1		
	26841	Injector Fitting, PVDF			1	1
3	10339*	Spring, PVDF	1	1	1	1
4	10338*	Ball, Ceramic, .375"	4	4	4	4
5	29443*	Seal Ring, Polyprel	4	4	4	4
6	10392	Valve Seat, GFR Polypropylene	2	2		
	26839	Valve Seat, PVDF			2	2
7	26136	Clamp Ring, SS	3	3	3	3
8	10299	Coupling Nut	4	4	4	4
9	10342-16	Tubing, .375" O.D. Polyethylene	1		1	
	27342-16	Tubing, .375" O.D. Black Polyethylene		1		1
10	29610	Head, 0.9 SI GFR Polypropylene	1	1		
	29611	Head, 0.9 SI PVDF			1	1
11	10340	Screw, 10-24 x 3/4" S.S.	4	4	4	4
12	30917*	Liquifram™, 0.9 Co-polymer	1	1	1	1
14	10393	Valve Housing, GFR Polypropylene	2	2		
	26840	Valve Housing, PVDF			2	2
15	10978	Foot Valve Seat	1	1	1	1
16	10123	Strainer, Polypropylene	1	1	1	1
17	28013	Injection Check Valve Assembly	1	1		
	28025	Injection Check Valve Assembly			1	1
18	28017	Discharge Valve Assembly	1	1		
	28029	Discharge Valve Assembly			1	1
19	28016	Suction Valve Assembly	1	1		
	28028	Suction Valve Assembly			1	1
20	28014	Foot Valve Assembly	1	1		
	28026	Foot Valve Assembly			1	1
21	28015	Head Assembly, LE-191	1	1		
	28027	Head Assembly, LE-192			1	1
-----	32293	Tubing Straightener (not shown)	1	1	1	1

\*Parts included in Spare Parts Kit SP-U7



**8 Post Office Square  
Acton, MA 01720 USA  
TEL: (978) 263-9800  
FAX: (978) 264-9172  
<http://www.lmipumps.com>**