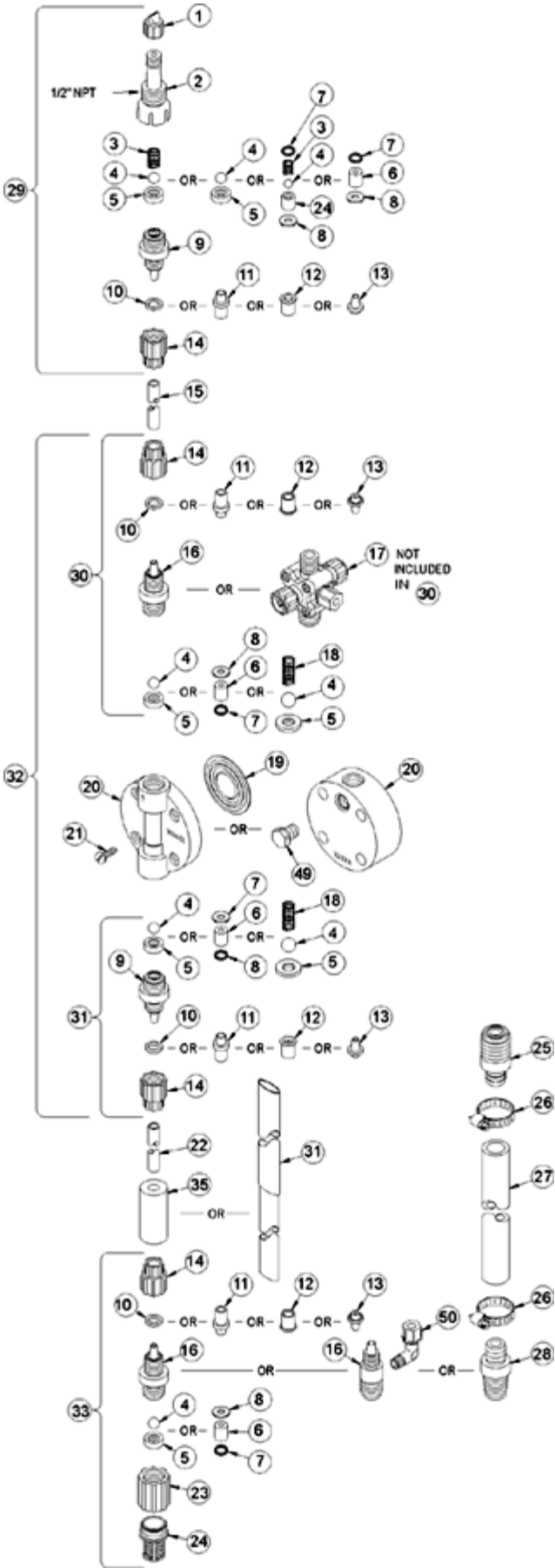


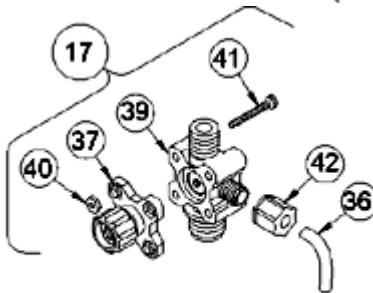
LE-358BN



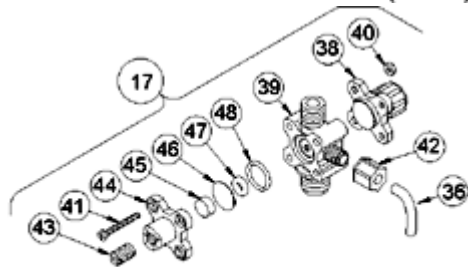
| Key # | Part # | Description | Qty |
|-------|----------|------------------------------------|-----|
| 1 | 27352 | FLAPPER VALVE ,SANTOPRENE | 1 |
| 2 | 37351 | FITTING, LIQUIPRO, PVDF | 1 |
| 3 | 37341 | SPRING, COMPRESSION | 1 |
| 4 | 10338 | BALL, .375 CERAMIC | 1 |
| 6 | 36304 | CARTRIDGE ASM, .281,PVDF/POLYPREL | 4 |
| 7 | 36103 | O-RING,POLYPREL | 4 |
| 8 | 36107 | WASHER, CARTRIDGE VALVE | 4 |
| 11 | 30877 | FERRULE, TUBING,3X6mm/4X6mm | 4 |
| 14 | 30860 | COUPLING NUT, METRIC | 4 |
| 15 | 25636-16 | TUBING, .250 X .062 PE | 1 |
| 16 | 37763 | FITTING,1/4 TUBING PVC | 3 |
| 17 | 37999 | VALVE ASM, A/S BLEED,3X6mm PVC | 1 |
| 19 | 30916 | LIQUIFRAM, 0.5,FLUORFILM | 1 |
| 20 | 37750 | HEAD, 0.5 MOLDED PVC | 1 |
| 21 | 10340 | SCREW, 10-24 X .75 PH SS | 4 |
| 23 | 36204 | COUPLING, FOOT VALVE PP | 1 |
| 24 | 10123 | STRAINER, FOOT VALVE PP | 1 |
| 29 | 38029 | VALVE ASM, INJ 4X6mm,PVC | 1 |
| 31 | 38023 | VALVE ASM, SUC 3X6mmPVC POLYPREL | 1 |
| 33 | 38036 | VALVE ASM, FOOT 3X6mm,PVC/POLYPREL | 1 |
| 34 | 37340 | SEAT, PTFE | 1 |
| 35 | 10322 | WEIGHT, SUCTION TUBING | 1 |
| 36 | 25636-10 | TUBING, .250 X .062 PE | 1 |
| 38 | 36280 | CAP ASM, A/S | 1 |
| 39 | 38002 | VALVE BODY,4FV/BLEED 1/4 PVC | 1 |
| 40 | 25628 | NUT, 6-32 HEX SS | 4 |
| 41 | 25627 | SCREW, 6-32 X 1.25 PH SS | 4 |
| 42 | 25631 | NUT, RELIEF TUBING | 1 |
| 43 | 34876 | SCREW, BLEED | 1 |
| 44 | 32171 | CAP, THREADED RELIEF | 1 |
| 45 | 34868 | DISK, .490 OD X .20 | 1 |
| 47 | 32175 | O-RING, .234 ID X .139 W | 1 |
| 48 | 32176 | O-RING, .676 ID X .070 W | 1 |



4-FUNCTION VALVE (4FV)



3-FUNCTION VALVE (3FV)



4-FUNCTION BLEED VALVE (B-4FV)

[Return to selection page](#)