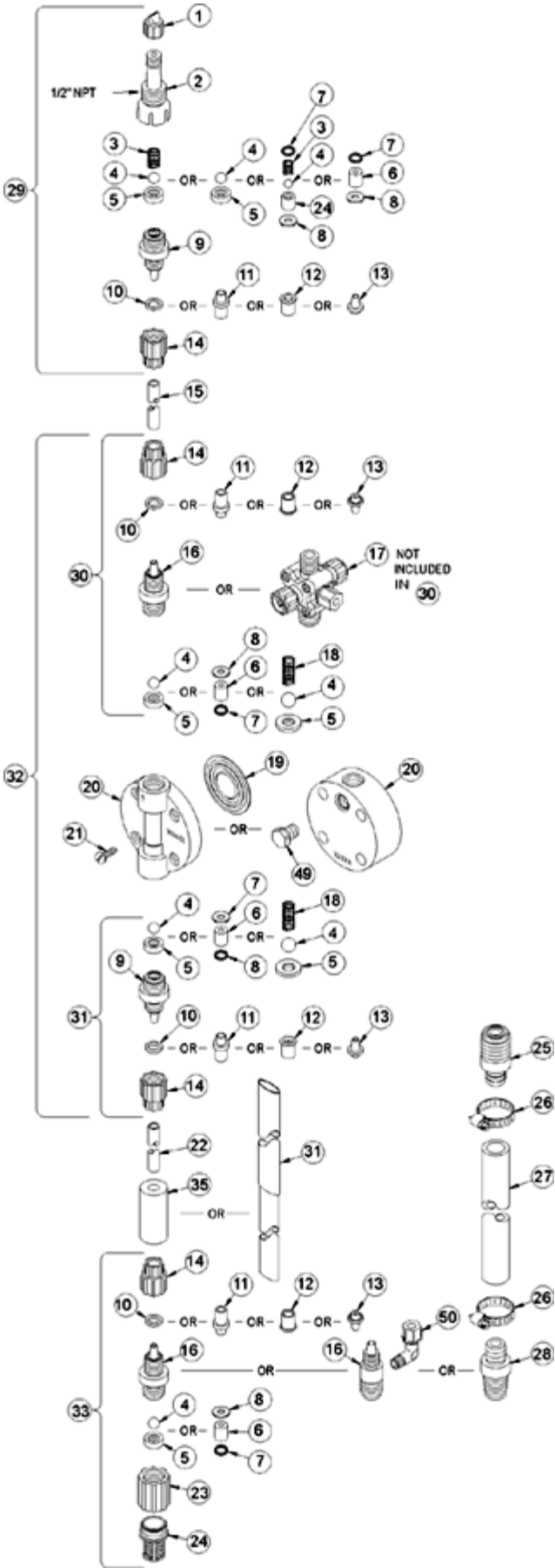


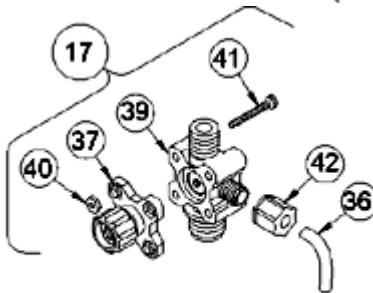
# LE-361SM



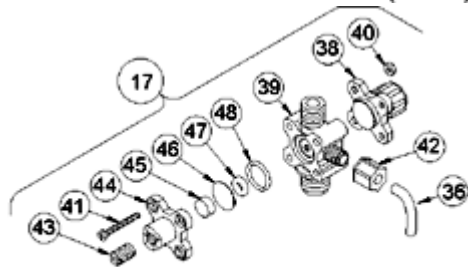
| Key # | Part #   | Description                        | Qty |
|-------|----------|------------------------------------|-----|
| 1     | 27352    | FLAPPER VALVE ,SANTOPRENE          | 1   |
| 2     | 37351    | FITTING, LIQUIPRO, PVDF            | 1   |
| 3     | 37341    | SPRING, COMPRESSION                | 1   |
| 4     | 10338    | BALL, .375 CERAMIC                 | 1   |
| 6     | 36307    | CARTRIDGE ASM, .375 PVDF/POLYPREL  | 3   |
| 7     | 36103    | O-RING,POLYPREL                    | 4   |
| 8     | 36107    | WASHER, CARTRIDGE VALVE            | 4   |
| 12    | 34461    | SLEEVE, METRIC 5X8mm/6X8mm         | 4   |
| 14    | 30860    | COUPLING NUT, METRIC               | 4   |
| 16    | 37765    | FITTING,3/8 TUBING PVC             | 3   |
| 17    | 38007    | VALVE ASM, 4FV 6X8mm,PVC           | 1   |
| 19    | 31420    | LIQUIFRAM, 1.8,FLUOROFILM          | 1   |
| 20    | 37754    | HEAD, 1.8 MOLDED PVC               | 1   |
| 21    | 10340    | SCREW, 10-24 X .75 PH SS           | 4   |
| 23    | 36204    | COUPLING, FOOT VALVE PP            | 1   |
| 24    | 10123    | STRAINER, FOOT VALVE PP            | 1   |
| 29    | 38030    | VALVE ASM, INJ 6X8mm,PVC           | 1   |
| 31    | 38024    | VALVE ASM, SUC 6X8mm,PVC POLYREL   | 1   |
| 33    | 38037    | VALVE ASM, FOOT 6X8mm,PVC/POLYPREL | 1   |
| 34    | 37340    | SEAT, PTFE                         | 1   |
| 35    | 10322    | WEIGHT, SUCTION TUBING             | 1   |
| 36    | 25636-10 | TUBING, .250 X .062 PE             | 1   |
| 37    | 36260    | CAP ASM, RELIEF                    | 1   |
| 38    | 36280    | CAP ASM, A/S                       | 1   |
| 39    | 38011    | VALVE BODY,4FV/BLEED 3/8 PVC       | 1   |
| 40    | 25628    | NUT, 6-32 HEX SS                   | 4   |
| 41    | 25627    | SCREW, 6-32 X 1.25 PH SS           | 4   |
| 42    | 25631    | NUT, RELIEF TUBING                 | 1   |



4-FUNCTION VALVE (4FV)



3-FUNCTION VALVE (3FV)



4-FUNCTION BLEED VALVE (B-4FV)

[Return to selection page](#)