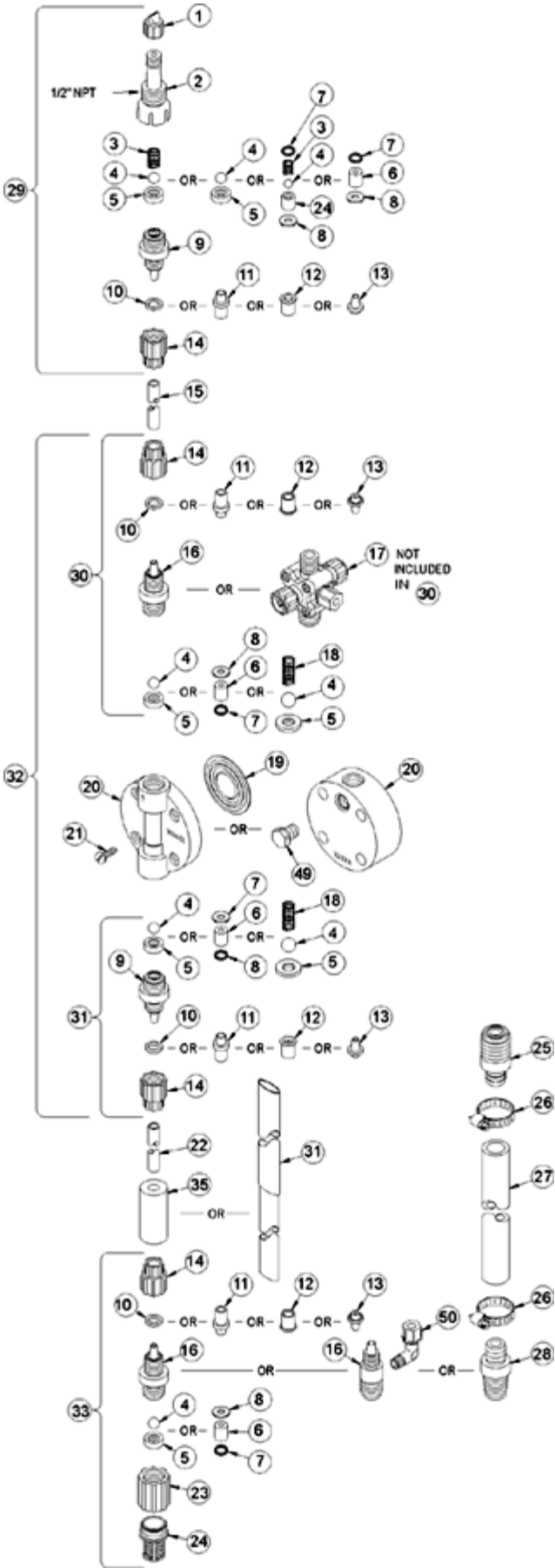
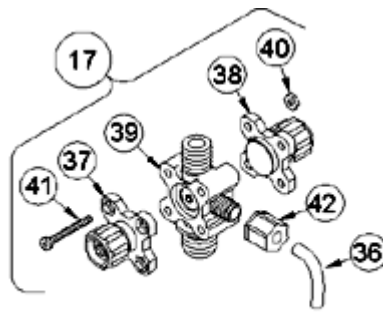


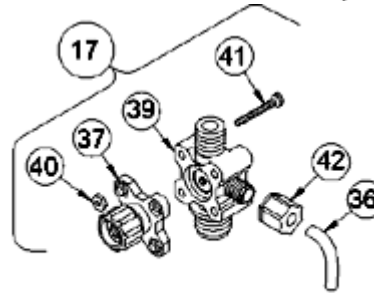
**LE-468BP**



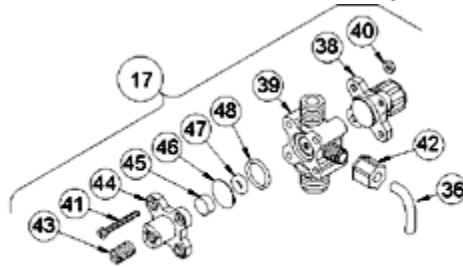
| Key # | Part #   | Description                                | Qty |
|-------|----------|--|-----|
| 1     | 27352    | FLAPPER VALVE ,SANTOPRENE                  | 1   |
| 2     | 37351    | FITTING, LIQUIPRO, PVDF                    | 1   |
| 3     | 37341    | SPRING, COMPRESSION                        | 1   |
| 4     | 10338    | BALL, .375 CERAMIC                         | 1   |
| 6     | 36307    | CARTRIDGE ASM, .375 PVDF/POLYPREL          | 3   |
| 7     | 36103    | O-RING,POLYPREL                            | 4   |
| 8     | 36107    | WASHER, CARTRIDGE VALVE                    | 4   |
| 16    | 37767    | FITTING,1/4 NPT PVC                        | 3   |
| 17    | 37984    | VALVE ASM, A/S BLEED,1/4' NPT PVC          | 1   |
| 19    | 31420    | LIQUIFRAM, 1.8,FLUOROFILM                  | 1   |
| 20    | 37742    | HEAD, 1.8 MACHINED PVC                     | 1   |
| 21    | 10340    | SCREW, 10-24 X .75 PH SS                   | 4   |
| 23    | 36204    | COUPLING, FOOT VALVE PP                    | 1   |
| 24    | 10123    | STRAINER, FOOT VALVE PP                    | 1   |
| 29    | 38028    | VALVE ASM, INJ 1/4' NPT,PVC                | 1   |
| 31    | 38021    | VALVE ASM, SUC 1/4' NPT,PVC POLYPREL       | 1   |
| 33    | 38034    | VALVE ASM, FOOT 1/4' NPT,PVC/POLYPREL .375 | 1   |
| 34    | 37340    | SEAT, PTFE                                 | 1   |
| 36    | 25636-10 | TUBING, .250 X .062 PE                     | 1   |
| 38    | 36280    | CAP ASM, A/S                               | 1   |
| 39    | 37989    | VALVE BODY,4FV/BLEED 1/4 NPT PVC           | 1   |
| 40    | 25628    | NUT, 6-32 HEX SS                           | 4   |
| 41    | 25627    | SCREW, 6-32 X 1.25 PH SS                   | 4   |
| 42    | 25631    | NUT, RELIEF TUBING                         | 1   |
| 43    | 34876    | SCREW, BLEED                               | 1   |
| 44    | 32171    | CAP, THREADED RELIEF                       | 1   |
| 45    | 34868    | DISK, .490 OD X .20                        | 1   |
| 47    | 32175    | O-RING, .234 ID X .139 W                   | 1   |
| 48    | 32176    | O-RING, .676 ID X .070 W                   | 1   |



4-FUNCTION VALVE (4FV)



3-FUNCTION VALVE (3FV)



4-FUNCTION BLEED VALVE (B-4FV)

[Return to selection page](#)