

www.neptune1.com



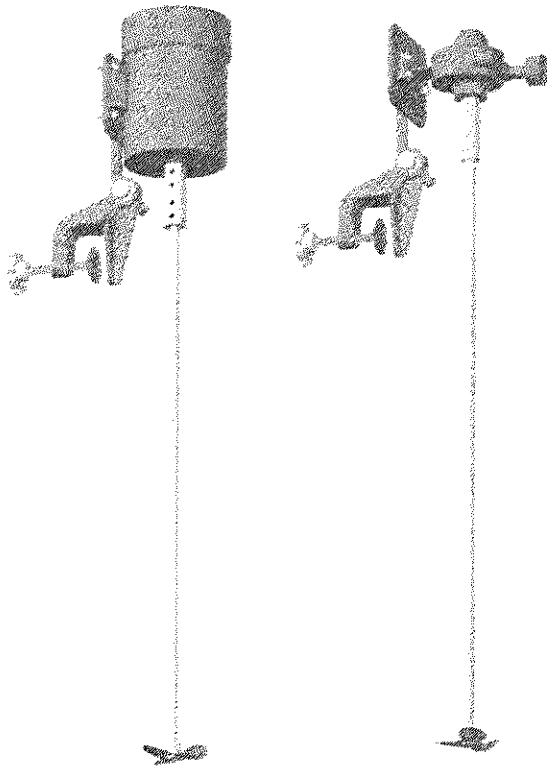
295 DeKalb Pike
North Wales, PA 19454
Tel: 215-699-8700
Fax: 215-699-0370
Toll Free Fax: 1-800-255-4017

SERIES A & B PORTABLE MIXERS ASSEMBLY INSTRUCTIONS AND PARTS LIST

**ATTENTION: TO INSURE SAFE AND EASY USE OF YOUR NEPTUNE MIXER,
READ THESE INSTRUCTIONS BEFORE USING.**

Description

Series A & B Mixers are designed for economical mixing of small tanks and open head drums. The mixer can be easily mounted and the shaft angle can be easily adjusted for optimum mixing. The mixer can be conveniently moved from one container to another.



MODEL A-1.0

MODEL B-4.0

Series A & B Mixers

Unpacking

When unpacking the mixer, check carefully for damage that may have occurred during transit. Check for missing parts.

General Safety Information

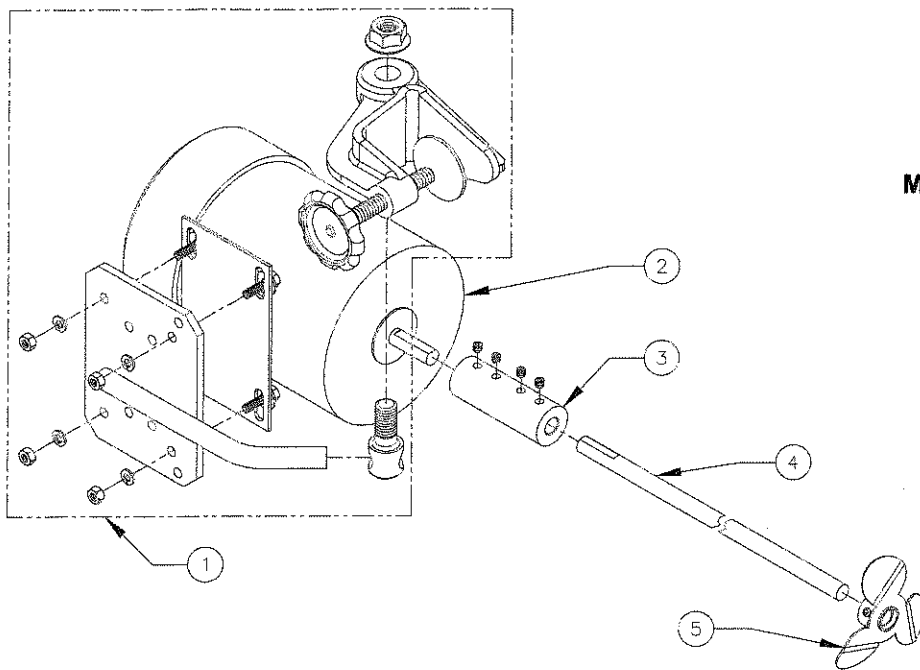
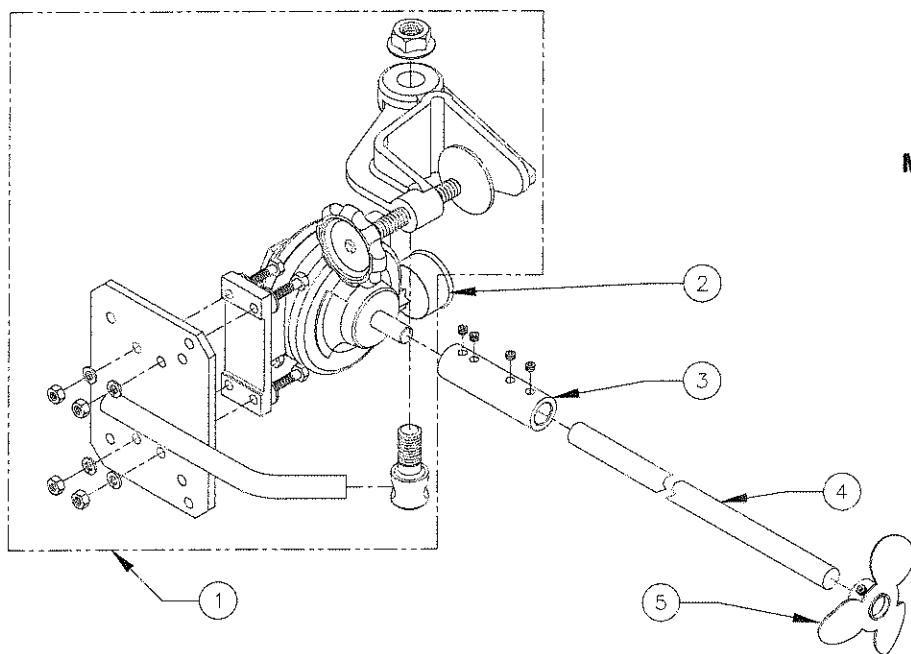
Warning: These mixers are intended for specific functions. Please follow all instructions to insure safe and proper use.

- (1) Be certain that all mounting hardware and the coupling and propeller set screws are properly tightened prior to operation.
- (2) Clamp securely to rim. Be certain propeller is not touching side or bottom of tank.
- (3) Series A & B Mixers are intended for use on open head drums or small tanks 100 gallons or less. Only the most mild of mixing can be accomplished in larger tanks.
- (4) Perform electrical connections and wiring in accordance with the electrical area requirements and local electrical codes.
- (5) Do not attempt to adjust mixer when mixer is operating, this could result in personal injury or damage to the tank and mixer.
- (6) Always wear required safety equipment including eye protection when observing mixer performance or when adding materials to a tank while the mixer is operating.

Assembly Instructions

Series A & B Mixers

- (1) Bolt motor to clamp assembly using enclosed hardware.
- (2) Place pivot bolt through clamp body so that head of bolt inserts in recess—attach hex nut.
- (3) Insert mounting plate bar through hole in pivot bolt. Tightening hex nut binds motor mounting plate to main-tam position.
- (4) Attach coupling to motor shaft using setscrews. Note, the end of the coupling with the two setscrews spaced closely together attach to the motor.
- (5) Attach propeller to round end of mixer shaft.
- (6) Insert end of shaft with flat into coupling and tighten setscrews.
- (7) Recheck all hardware for proper tightening.
- (8) Attach to tank using handwheel on clamp.

**MODEL A-1.0****MODEL B-4.0**

ITEM NO.	DESCRIPTION	MIXER MODELS	
		A-1.0 PART NUMBER	B-4.0 PART NUMBER
1	CLAMP ASSEMBLY	002398	002398
2	MOTOR	100653	100780
3	COUPLING (WITH SET SCREWS)	002518	002522
4	SHAFT 1/2" DIA. X 32" LG.	000507	
	SHAFT 5/8" DIA. X 35" LG.		000551
5	PROPELLER (WITH SET SCREW)	000514	000539