



Griffco Valve Inc.
 6010 N. Bailey Ave. Suite. 1B
 Amherst, NY 14226
 PH: 716 835-0891
 FAX: 716 835-0893

G-SERIES BACK PRESSURE VALVES



Griffco G-Series diaphragm back pressure valves are designed to enhance the performance of chemical feed systems by applying a continuous back pressure to the chemical feed pump, while also acting as an anti-siphon valve. Robust construction ensures reliability in the rigorous service of municipal and industrial applications. Wetted materials include: **PVC, CPVC, PP, PVDF, PTFE, 316 SS, A20 and Hast. C.** Available sizes: 1/2+ - 4+

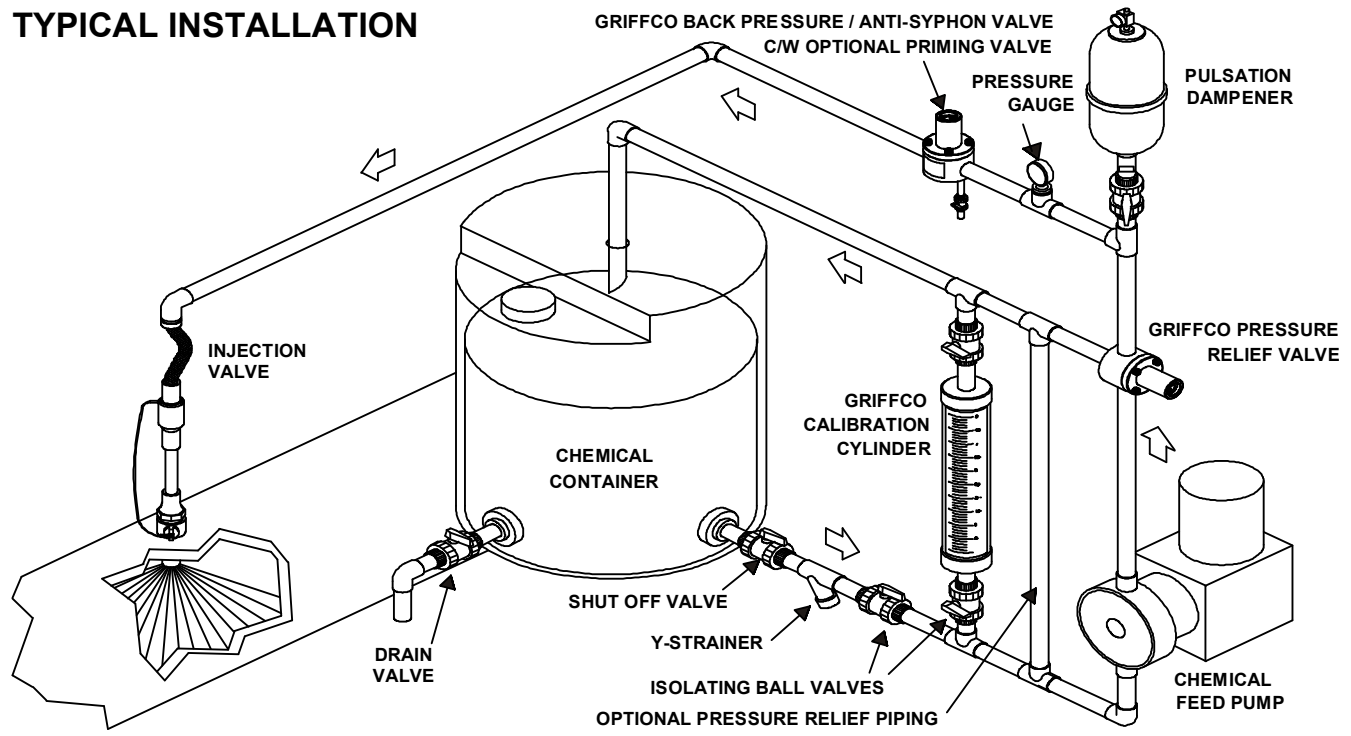
Features:

- High Reliability / Low Cost
- Vulcanised PTFE/EPDM Diaphragm
- Adjustable 0 - 250 PSI
- Optional 350 PSI Rated Valve
- Anti-Siphon Function
- Robust, Machined Construction
- Tamper Resistant Adjustment Screw
- Wide Range of Materials

Operation:

Griffco diaphragm back pressure valves apply positive discharge pressure to a metering pump system to prevent siphoning and eliminate varying dosage rates caused by fluctuating downstream pressure. The diaphragm is held against the valve seat by an internal spring. When the preset pressure is exceeded, the diaphragm is forced up and chemical flows through the valve to the injection point. The valves are preset for 50 psi, however they are field adjustable from 0 - 250 psi via the adjustment screw. Installation should be as close to the injection point as possible to prevent chemical line drainage, and it is most important that all chemical system equipment such as pulsation dampeners and pressure gauges are between the pump and back pressure valve.

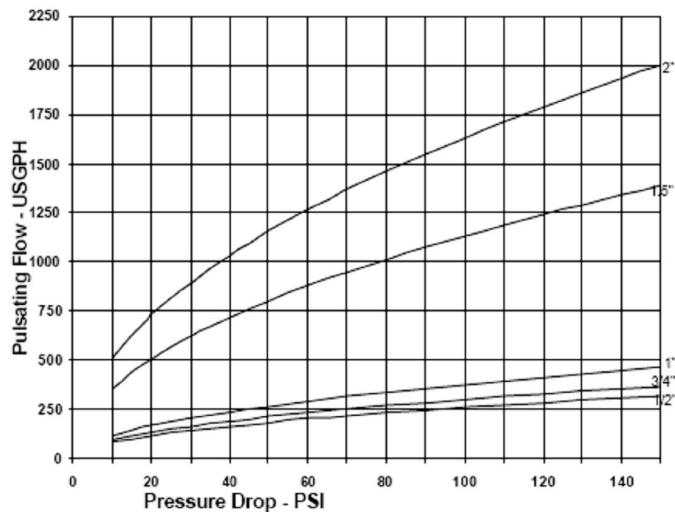
TYPICAL INSTALLATION



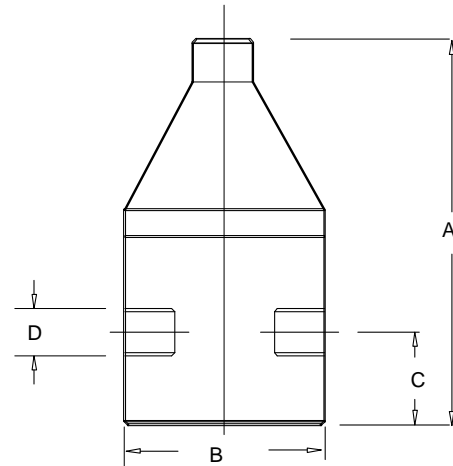
Technical Data:

Model BPG Sizes:		1/2", 3/4", 1", 1 1/2", 2", 3", 4"			
Connections:		NPT, Socket, Flange			
Pressure Adjustment		0 - 50 psi, 0 - 150 psi, 0 - 250 psi, 50 - 350 psi (optional on Metal Valves)			
Flow Rates @ 150 psi		Shipping Weight: lbs			
Size	Pulsating	Continuous	Plastic	Metal / Plastic Top	Metal / Metal Top
1/2"	300 USgph	21 USgpm	3.0	5.5	6.5
3/4"	300 USgph	21 USgpm	3.0	5.5	6.5
1"	500 USgph	26 USgpm	3.5	6.0	7.0
1 1/2"	1200 USgph	63 USgpm	9.0	18.5	26.0
2"	2350 USgph	120 USgpm	9.0	20.0	30.0
3"	5200 USgph	270 USgpm	28.0		
4"	5200 USgph	270 USgpm	30.0		
Max Temperature: (°F)		Plastic: 140° ; Metal: 300°, (Peak Short Term 390°)			
Materials of Construction:					
Diaphragm		PTFE / EPDM, Optional: Viton & PTFE / Viton			
Valve Top		Standard: PVC Optional: CPVC, 316 SS, Others on Request			
Valve Body		PVC, CPVC, PP, PTFE, PVDF, 316 SS, A 20, Hast. C, Others on Request			

Performance Curves: (3" & 4" on request)



Dimensions: (inches)



Product Codes For Ordering Back Pressure Valves:

BPG
1 2 3

1 = Size

050 - 1/2+
 075 - 3/4+
 100 - 1+
 150 - 1 1/2+
 200 - 2+
 300 - 3+
 400 - 4+

2 = Material

P - PVC
 CP - CPVC
 PP - Polypro
 T - PTFE
 V - PVDF
 S - 316 SS
 A - Alloy 20
 C - Hastalloy C

3 = Options

V - Viton Diaphragm
 S - Socket Connections
 F - Flanged Connections
 OSS - Optional 316 SS Top
 MSS - 50 - 350 psi; 316 SS Top
 AR - Optional Air Release Port

D	A	B	C
1/2+	5.60	3.50	1.10
3/4+	5.60	3.50	1.10
1+	5.90	3.50	1.25
1 1/2+	8.95	4.50	2.10
2+	8.95	5.00	2.10
3+flanged	12.0	15.0	3.0
4+flanged	12.0	15.0	3.0