



Griffco Valve Inc.
6010 North Bailey Ave. Ste 1B
Amherst, NY 14226
Phone: 1 800-474-3326
Fax: 1 716-835-0893

BACK PRESSURE VALVES



Griffco diaphragm back pressure valves are designed to enhance the performance of chemical feed systems by applying a continuous back pressure to the chemical feed pump, while also acting as an anti-siphon valve. Robust construction ensures reliability in the rigorous service of municipal and industrial applications. Wetted materials include: **PVC, CPVC, PP, PVDF, PTFE, 316 SS, A 20 and Hast. C.** Available sizes: 1/2 - 2".

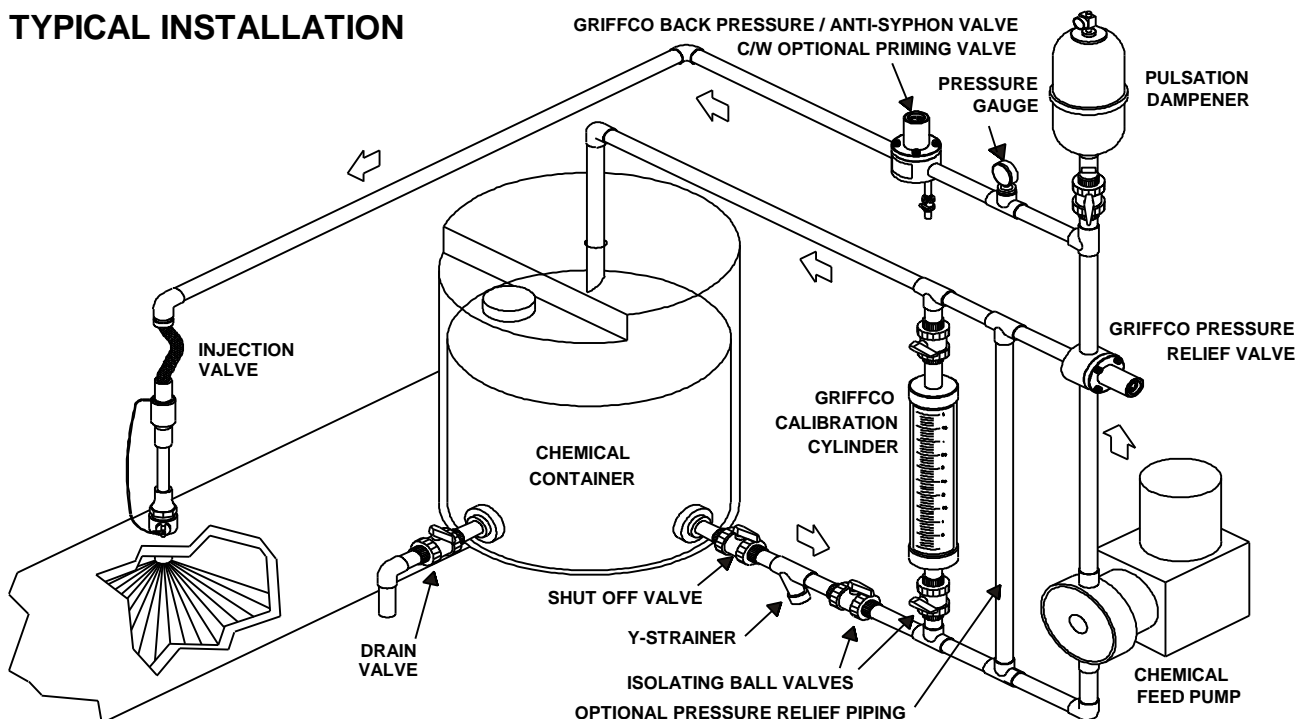
Features:

- ✂ **High Reliability / Low Cost**
- ✂ **Robust, Machined Construction**
- ✂ **Vulcanised PTFE/EPDM Diaphragm**
- ✂ **Adjustable 10 - 150 PSI**
- ✂ **Optional 350 PSI Rated Valve**
- ✂ **Anti-Siphon Function**
- ✂ **Wide Range of Materials**
- ✂ **Tamper Resistant Adjustment Screw**
- ✂ **Corrosion Resistant Design**

Operation:

Griffco diaphragm back pressure valves apply positive discharge pressure to a metering pump system to prevent siphoning and eliminate varying dosage rates caused by fluctuating downstream pressure. The diaphragm is held against the valve seat by an internal spring. When the preset pressure is exceeded, the diaphragm is forced up and chemical flows through the valve to the injection point. The valves are preset for 50 psi, however they are field adjustable from 10 - 150 psi via the adjustment screw. Installation should be as close to the injection point as possible to prevent chemical line drainage, and it is most important that all chemical system equipment such as pulsation dampeners and pressure gauges are between the pump and back pressure valve.

TYPICAL INSTALLATION



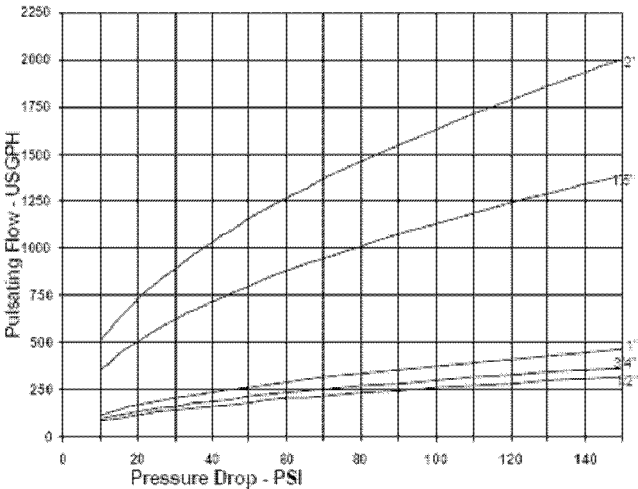
CALL 1 - 800 - GRIFFCO

Bulletin # BPV1003-2002

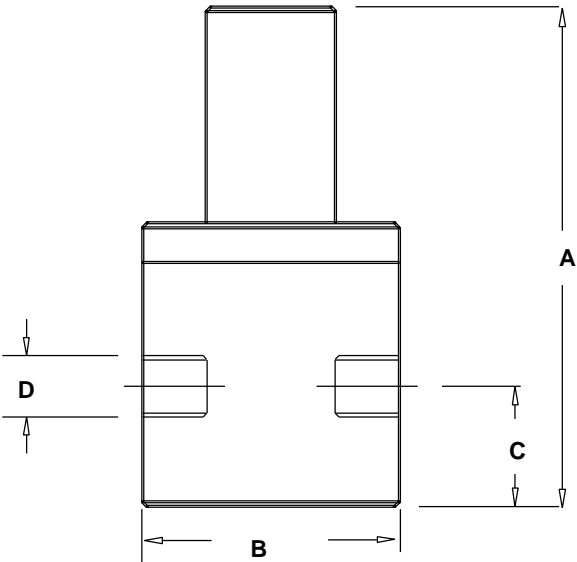
Technical Data:

Sizes: Model BPV			1/2", 3/4", 1", 1 1/2", 2"		
Connections:			NPT, Socket, Flange		
Pressure Adjustment			10 - 50 psi, 10 - 150 psi, 50 - 350 psi		
Flow Rates @ 150 psi			Shipping Weight: lbs		
Size	Pulsating	Continuous	Plastic	Metal / Plastic Top	Metal / Metal Top
1/2"	320 USgph	16 USgpm	3.0	5.5	6.5
3/4"	367 USgph	19 USgpm	3.0	5.5	6.5
1"	461 USgph	24 USgpm	3.5	6.0	7.0
1 1/2"	1388 USgph	72 USgpm	9.0	18.5	26.0
2"	2000 USgph	104 USgpm	9.0	20.0	30.0
Max Temperature: (°F)			Plastic: 140° ; Metal: 300°, (Peak Short Term 390°)		
Materials of Construction:					
Diaphragm			PTFE / EPDM, Optional: Viton & PTFE / Viton		
Valve Top			Standard: PVC Optional: CPVC, Steel, 316 SS, Others on Request		
Valve Body			PVC, CPVC, PP, PTFE, PVDF, 316 SS, A 20, Hast. C, Others on Request		

Performance Curves:



Dimensions:



Product Codes For Ordering:

BPV	?	?	?	?
	1	2	3	
1 = Size	2 = Material		3 = Options	
050 - 1/2"	P - PVC	V - Viton Diaphragm	S - Socket Connections	
075 - 3/4"	CP - CPVC	OS - Optional Steel Top	F - Flanged Connections	
100 - 1"	PP - Polypro	OSS - Optional 316 SS Top		
150 - 1 1/2"	T - PTFE	MS - 50 - 350 psi Valve, SteelTop		
200 - 2"	K - PVDF	MSS - 50 - 350 psi; 316 SS Top		
	S - 316 SS	AR - Optional Air Release Port		
	A - Alloy 20			
	C - Hastalloy C			

D	A	B	C
1/2"	5.60	3.50	1.10
3/4"	5.60	3.50	1.10
1"	5.90	3.50	1.25
1 1/2"	8.95	4.50	2.10
2"	8.95	5.00	2.10