



Griffco Valve Inc.
6010 N. Bailey Ave, Ste 1B
Amherst, NY 14226
Phone: 1 800-474-3326
Fax: 1 716-835-0893

PRESSURE RELIEF VALVE



Griffco diaphragm pressure relief valves are designed to protect chemical feed systems from over pressure damage caused by defective equipment or a blockage in the chemical feed line.. Robust construction ensures reliability in the rigorous service of municipal and industrial applications. Wetted materials include: **PVC, CPVC, PP, PVDF, PTFE, 316 SS, A 20 and Hast. C.** Available sizes: 1/2" - 2".

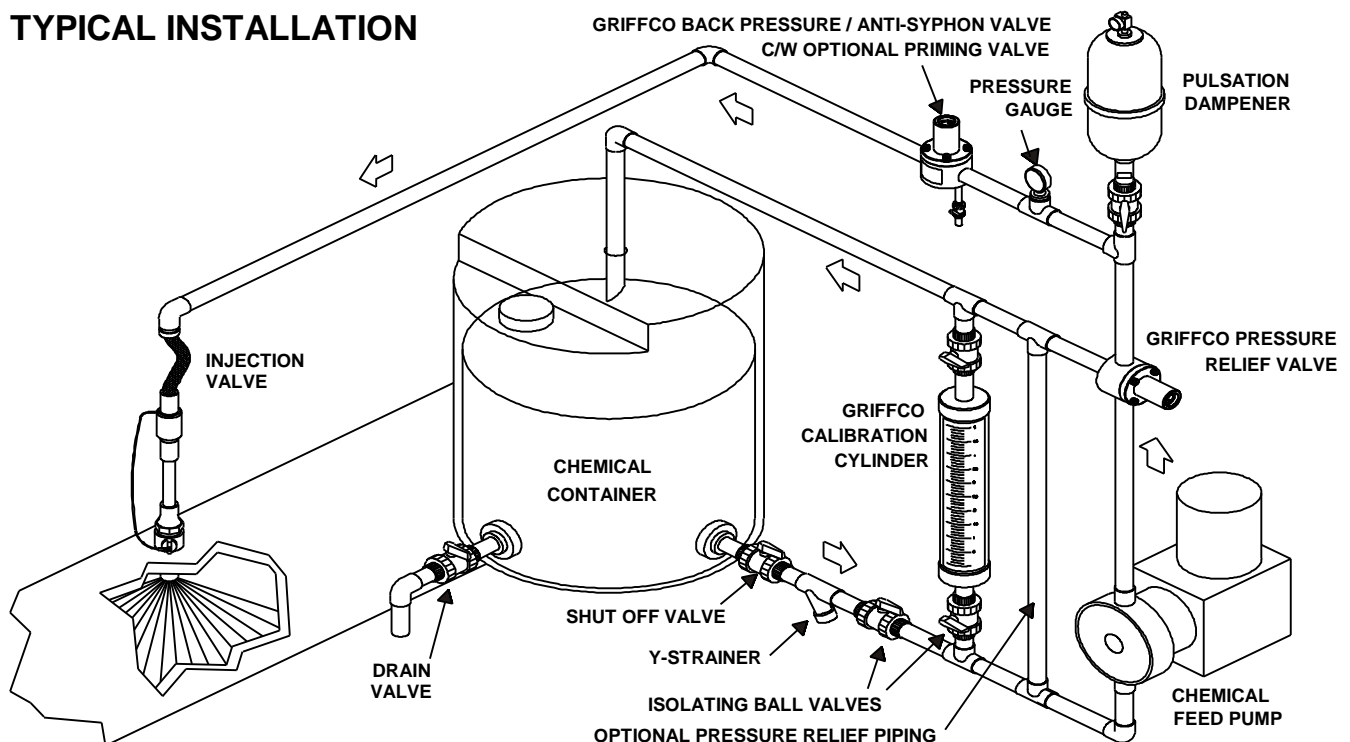
Features:

- ✂ **High Reliability / Low Cost**
- ✂ **Robust, Machined Construction**
- ✂ **Vulcanised PTFE/EPDM Diaphragm**
- ✂ **Adjustable 10 - 150 PSI**
- ✂ **Optional 350 PSI Rated Valve**
- ✂ **2 & 3 Port Configurations**
- ✂ **Ventable to Suction Line**
- ✂ **Wide Range of Materials**
- ✂ **Corrosion Resistant Design**

Operation:

Griffco diaphragm pressure relief valves operate when the pressure in the chemical system exceeds the preset pressure of the valve. The diaphragm is held against the valve seat by an internal spring. When the preset pressure is exceeded the diaphragm is forced up and the chemical flows out the relief port, back to the chemical tank or to the suction side of the pump. The valves are pre-set at 50 psi, however they are field adjustable from 10 - 150 psi, (optional 350 psi) via the adjustment screw. The relief valve should be set approximately 15 psi higher than the system pressure. Installation should be made as close to the pump as possible, without any valves or accessories between the relief valve and the pump. Consult your pump manufacturer for his recommendations.

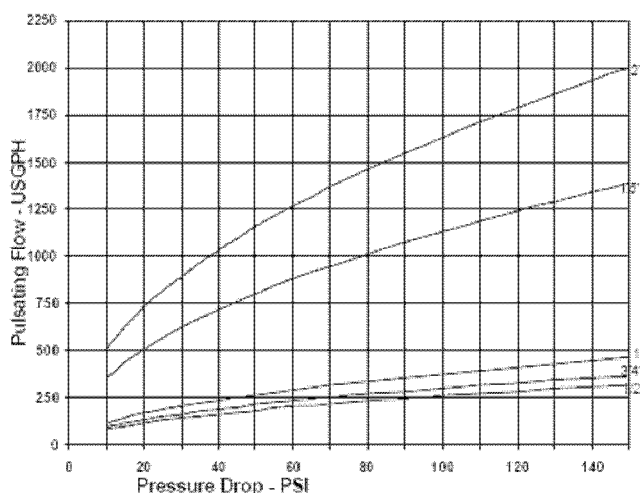
TYPICAL INSTALLATION



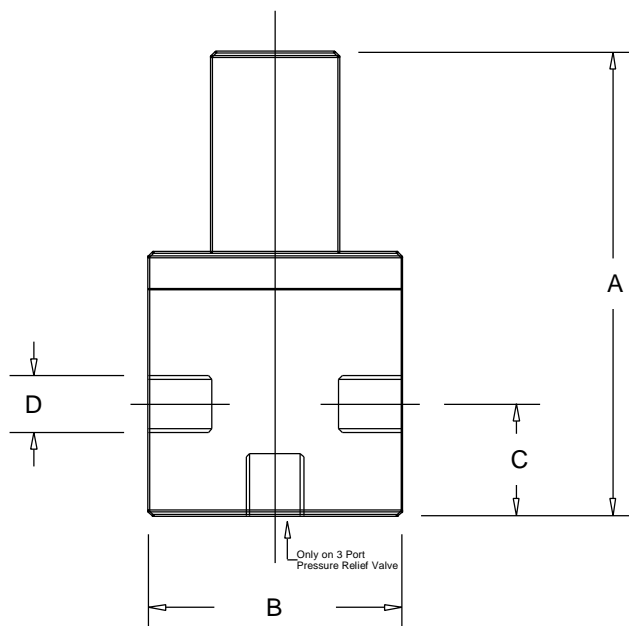
Technical Data:

Sizes: Model PRV			1/2", 3/4", 1" - 3 port valves : 1 1/2" and 2" - 2 port valves		
Connections:			NPT, Socket, Flange		
Pressure Adjustment			10 - 50 psi, 10 - 150 psi, 50 - 350 psi		
Flow Rates @ 150 psi			Shipping Weight: lbs		
Size	Pulsating	Continuous	Plastic	Metal / Plastic Top	Metal / Metal Top
1/2"	320 USgph	16 USgpm	3.0	5.5	6.5
3/4"	367 USgph	19 USgpm	3.0	5.5	6.5
1"	461 USgph	24 USgpm	3.5	6.0	7.0
1 1/2"	1388 USgph	72 USgpm	9.0	18.5	26.0
2"	2000 USgph	104 USgpm	9.0	20.0	30.0
Max Temperature: (°F)			Plastic: 140° ; Metal: 300°, (Peak Short Term 390°)		
Materials of Construction:					
Diaphragm			PTFE / EPDM, Optional: Viton & PTFE / Viton		
Valve Top			Standard: PVC Optional: CPVC, Steel, 316 SS, Others on Request		
Valve Body			PVC, CPVC, PP, PTFE, PVDF, 316 SS, A 20, Hast. C, Others on Request		

Performance Curves:



Dimensions:



Product Codes For Ordering:

PRV

?? ? ?
1 2 3

1 = Size

050 - 1/2"
075 - 3/4"
100 - 1"
150 - 1 1/2"
200 - 2"

2 = Material

P - PVC
P - CPVC
PP - Polypro
T - PTFE
K - PVDF
S - 316 SS
A - Alloy 20
C - Hastalloy C

3 = Options

V - Viton Diaphragm
S - Socket Connections
F - Flanged Connections
OS - Optional Steel Top
OSS - Optional 316 SS Top
MS - 50 - 350 psi Valve, Steel Top
MSS - 50 - 350 psi; 316 SS Top

D	A	B	C
1/2"	5.60	3.50	1.10
3/4"	5.60	3.50	1.10
1"	5.90	3.50	1.25
1 1/2"	8.95	4.50	2.10
2"	8.95	5.00	2.10

For more detailed information visit us at www.griffcovalve.com