

# Liquid End Sheet

LE-24

When pumping solutions, make certain that all tubing is securely attached to the fittings. It is recommended that tubing or pipe lines be shielded to prevent possible injury in case of rupture or accidental damage. Always wear protective clothing and face shield when working on or near your metering pump.

**Note: See parts list for materials of construction**

## A. INSTALLING INJECTION CHECK VALVE

1. The injection check valve should always be installed as close as possible to the point of solution injection.
2. Purpose of injection check valve is to prevent backflow from *treated line*, and to prevent syphoning or over-pumping of solution.
3. A 1/2" NPT female fitting with sufficient depth will accept the injection check valve.

## B. CONNECTING DISCHARGE PIPE

**NOTE:** Corrosion resistant 1/2" Schedule 80 or Schedule 120 should be used. Do not use 1/4" pipe.

1. Discharge valve has 1/2" NPT male outlet. A 1/2" NPT union should be connected to both discharge and suction valves so that metering pump may be removed without disturbing piping.

*It is recommended that Teflon® tape be used on tapered pipe threads so that there is a leakproof seal without overtightening of fittings.*

## C. CONNECTING SUCTION PIPE

1. Using the same size and material pipe as used on discharge line, cut suction pipe to required length.
2. Use of Teflon® tape on tapered pipe threads is, again, highly recommended to ensure that connections are leak proof. Suction side leaks are invisible, but if a leak is present pump will suck in air during each suction stroke.
3. Maximum recommended vertical suction lift is 5 ft (1.5 m).

## D. PRIMING

1. Temporarily loosen the union on top of discharge valve.
2. Start pump and set pump at near maximum (80%) speed and 100% stroke.

***Series D stroke cannot be adjusted until pump is operating electrically. Turn lower knob while unit is stroking.***

3. As soon as solution begins to leak at the union on top of discharge valve, stop the pump.
4. Pump is now primed.
5. Tighten union on top of discharge valve.



8 Post Office Square  
Acton, MA 01720 USA  
TEL: (978) 263-9800  
FAX: (978) 264-9172  
<http://www.lmipumps.com>



Replaces same of Rev. C 10/91  
1166.C 9/97

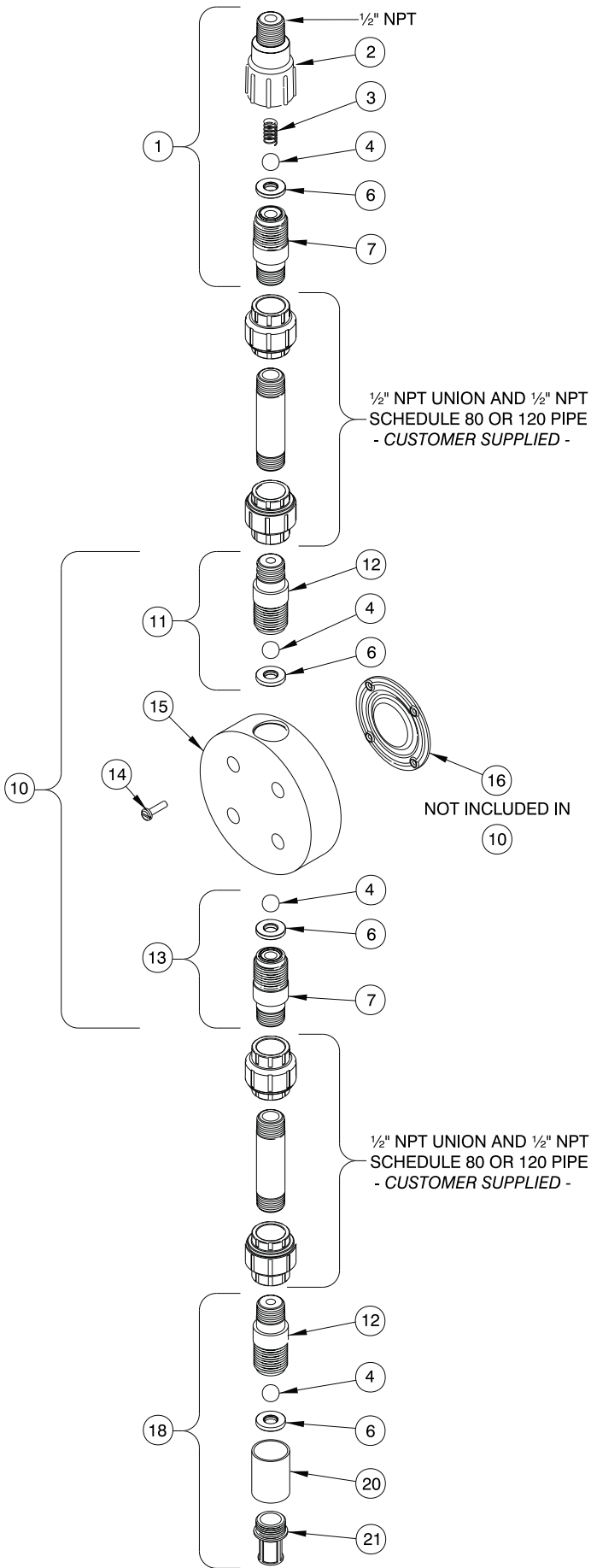
Threaded connections into pumphead are 1"- 12" straight threads. **Do not use Teflon® tape.** These joints are sealed by seal ring valve seats (item 6 on exploded view).

Key No.	Part No.	Description	QTY
1	26716	Injection Check/Back Pressure Valve	1
2	25108	Injector Fitting, PVC	1
3	10339*	Spring, PVDF	1
4	10138*	Ball, Ceramic .500	4
6	25128*	Seal Ring, PTFE	4
7	26001	Valve Seat, PVC 1/2" NPT	2
10	26017	Head Assembly, LE-24	1
11	26019	Discharge Valve Assembly	1
12	26024	Valve Housing, PVC 1/2" NPT	2
13	26020	Suction Valve Assembly	1
14	10340 <sup>+</sup>	Screw, 10-24 x 3/4" S.S.	4
15	10525	Head, 3.0 SI, PVC	1
16	25319*	Liquifram™, 3.0 SI, PTFE face	1
18	26021	Foot Valve Assembly	1
20	25600	Foot Valve Seat, Polypropylene	1
21	10123	Strainer	1

\* Parts included in Spare Parts Kit SP-U5.

<sup>+</sup> For use with LMI Series M metering pumps.

Order four (4) each, P/N 31112, Screw 10-24 x 1.5" SS.



© 1997 LMI Milton Roy - All Rights Reserved  
Printed in USA  
Specifications subject to change without notice.

Liquifram is a trademark of Liquid Metronics, Inc.  
Teflon is a registered trademark of E. I. du Pont de Nemours & Co., Inc.